

 **PROAQUA**[®]
PIPE SYSTEMS SINCE 1997

**PRODUCT
RANGE**



Axial fittings PRO AQUA for SDR 7.4 PE-X and PE-Xa pipes

Axial fittings (with compression sleeve) PRO AQUA are designed to connect PE-X and PE-RT polymer pipes S3.2 (SDR 7.4) series (according to EN ISO 15875, EN ISO 22391) used in cold and hot water supply systems, water heating systems, including surface heating systems and snow melting system. They are made of corrosion resistant brass CW617N. Tightness of junction is achieved by pressing the pipe wall to the fitting with the compression sleeve.

Advantages:

- high reliability,
- easy and quick installation;
- allowed to embed threadless fittings in building structures;
- no rubber seal rings
- ready to work and testing immediately after installation;
- minimal pressure losses due to increased flow section;
- general-purpose fittings for drinking water supply and heating;
- jointing with a special tool PRO AQUA;
- fittings may be dismantled and reused, if necessary;

Technical specifications:

- maximum operating temperature – 90 °C;
- maximum pressure – 10 bar;
- service life – min 50 years, for all classes of operation

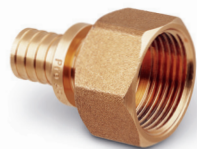


PE-Xa Pipe with oxygen barrier EVOH Standard: SDR 7.4 (S 3.2 Series)

Technical specifications:

- maximum operating temperature – 90 °C;
- maximum pressure – 10 bar;
- service life – min 50 years, for all classes of operation

Size, De×s, mm	Length	Code
16 x 2,2	120	PXA.04.06.120.S
16 x 2,2	240	PXA.04.06.240.S
16 x 2,2	500	PXA.04.06.500.S
20 x 2,8	120	PXA.04.08.120.S
25 x 3,5	50	PXA.04.10.050.S
32 x 4,4	50	PXA.04.12.050.S
40 x 5,5	50	PXA.04.14.050.S



Sleeve

Size	Code
16	AX10016ST
20	AX10020ST
25	AX10025
32	AX10032
40	AX10040

Sleeve

Size	Code
16	AX10016
20	AX10020

Coupling

Size	Code
16 x 16	AX11016
20 x 20	AX11020
25 x 25	AX11025
32 x 32	AX11032
40 x 40	AX11040

Reducing coupling

Size	Code
16 x 20	AX101620
16 x 25	AX102516
20 x 25	AX102520
25 x 32	AX103225
25 x 40	AX102540
32 x 40	AX103240

Coupling M

Size	Code
16 x 1/2"	AX1701612
16 x 3/4"	AX1701634
20 x 1/2"	AX1702012
20 x 3/4"	AX1702034
25 x 1/2"	AX1702512
25 x 1"	AX1702501
25 x 3/4"	AX1702534
32 x 1"	AX1703201
32 x 3/4"	AX1703234
40 x 1 1/4"	AX17040114

Coupling F

Size	Code
16 x 1/2"	AX1801612
16 x 3/4"	AX1801634
20 x 1/2"	AX1802012
20 x 3/4"	AX1802034
25 x 3/4"	AX1802534
25 x 1"	AX1802501
32 x 1"	AX1803201



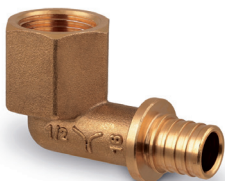
Elbow 90° M

Size	Code
16 x 1/2"	AX3301612
16 x 3/4"	AX3301634
20 x 1/2"	AX3302012
20 x 3/4"	AX3302034
25 x 3/4"	AX3302534
32 x 1"	AX3303201



Elbow 90° with wall mount

Size	Code
16 x 1/2"	AX5001612
20 x 1/2"	AX5002012



Elbow 90° F

Size	Code
16 x 1/2"	AX3501612
16 x 3/4"	AX3501634
20 x 1/2"	AX3502012
20 x 3/4"	AX3502034
25 x 3/4"	AX3502534
32 x 1"	AX3503201



Elbow 90° with union nut

Size	Code
16 x 1/2"	AX3501612NG
20 x 1/2"	AX3502012NG
20 x 3/4"	AX3502034NG
25 x 3/4"	AX3502534NG



Elbow 90°

Size	Code
16 x 16	AX3009016
20 x 20	AX3009020
25 x 25	AX3009025
32 x 32	AX3009032
40 x 40	AX3009040



Coupling with union nut

Size	Code
16 x 1/2"	AX6001612
16 x 3/4"	AX6001634
20 x 1/2"	AX6002012
20 x 3/4"	AX6002034
25 x 3/4"	AX6002534
32 x 1"	AX6003201
40 x 1 1/2"	AX60040112



Eurocone flat seal adapter

Size	Code
3/4	AXB.650.EK



Coupling with union nut Eurocone

Size	Code
16 x 3/4"	AX6001634.EK
20 x 3/4"	AX6002034.EK



Tee

Size	Code
16 x 16 x 16	AX20016
20 x 20 x 20	AX20020
25 x 25 x 25	AX20025
32 x 32 x 32	AX20032
40 x 40 x 40	AX20040

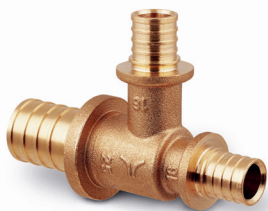


Tee F

Size	Code
16 x 1/2" x 16	AX9161216
20 x 1/2" x 20	AX9201220
25 x 3/4" x 25	AX9253425

Reducing tee

Size	Code
16 x 20 x 16	AX8162016
20 x 16 x 20	AX8201620
20 x 20 x 16	AX8202016
20 x 25 x 20	AX8202520
20 x 16 x 16	AX8201616
20 x 25 x 16	AX8202516
25 x 16 x 16	AX8251616
25 x 16 x 25	AX8251625
25 x 20 x 16	AX8252016
25 x 20 x 20	AX8252020
25 x 20 x 25	AX8252025
25 x 25 x 16	AX8252516
25 x 25 x 20	AX8252520
25 x 32 x 25	AX8253225
25 x 20 x 32	AX8322025
25 x 25 x 32	AX8322525
25 x 16 x 20	AX8251620
32 x 16 x 32	AX8321632
32 x 20 x 32	AX8322032
32 x 25 x 32	AX8322532
40 x 20 x 40	AX8402040
40 x 25 x 40	AX8402540
40 x 32 x 32	AX8403232
40 x 32 x 40	AX8403240



Long elbow with wall mount

Size	Code
16 x 1/2"	AX5001612L



Union connector G3/4-15

Size	Code
15x3/4"	AX415134



Union connectors

Size	Code
16x2,2	AX411622E
20x2,8	AX412028E



Manual expand and pressing tool

Size	Code
16 x 2,2; 20 x 2,8; 25 x 3,5; 32 x 4,4	AXTOOL-1632



L-type radiator tube

Size	Code
250 x 16	AX716250
300 x 16	AX716300
500 x 16	AX716500
750 x 16	AX716750
1000 x 16	AX7161000
250 x 20	AX720250
300 x 20	AX720300
500 x 20	AX720500
750 x 20	AX720750
1000 x 20	AX7201000



T-type radiator tube

Size	Code
250 x 16	AX416250
300 x 16	AX416300
500 x 16	AX416500
750 x 16	AX416750
1000 x 16	AX4161000
250 x 20	AX420250
300 x 20	AX420300
500 x 20	AX420500
750 x 20	AX420750
1000 x 20	AX4201000
250 x 20 x 16	AX42016250
250 x 16 x 20	AX41620250
250 x 25 x 20	AX42520250
250 x 20 x 25	AX42025250

PPSU fittings

- Technical specifications:**
- maximum operating temperature – 90 °C;
 - maximum pressure – 10 bar;
 - service life – min 50 years, for all classes of operation



Sleeve PVDF

Size	Code
16	AXP.100.16.E
20	AXP.100.20.E
25	AXP.100.25.E
32	AXP.100.32.E

Coupling

Size	Code
16	AXP.120.16
20	AXP.120.20
25	AXP.100.25
32	AXP.120.32

Reducing coupling

Size	Code
16x20	AXP.130.1620
16x25	AXP.130.1625
20x25	AXP.130.2025
25x32	AXP.130.2532

Elbow

Size	Code
16	AXP.220.16
20	AXP.220.20
25	AXP.220.25
32	AXP.220.32

Tee

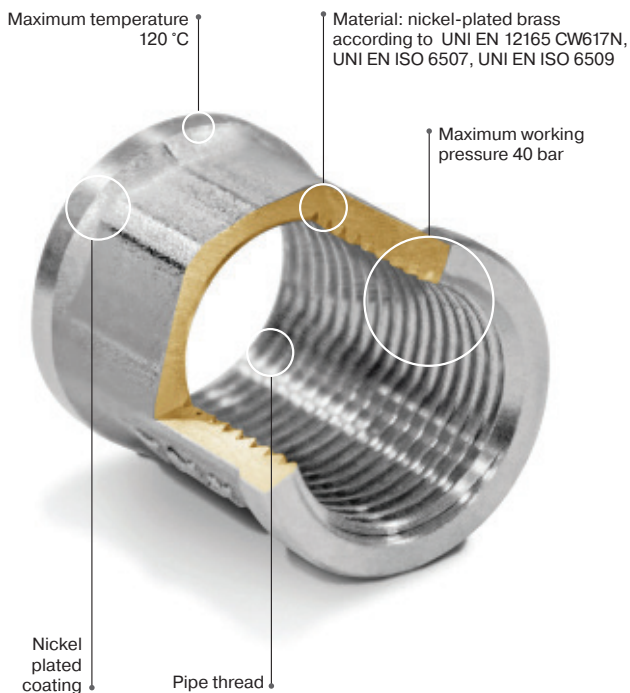
Size	Code
16	AXP.320.16
20	AXP.320.20
25	AXP.320.25
32	AXP.320.32

Reducing tee

Size	Code
16x20x16	AXP.330.162016
20x16x16	AXP.330.201616
20x16x20	AXP.330.201620
20x20x16	AXP.330.202016
20x25x16	AXP.330.202516
20x25x20	AXP.330.202520
25x16x16	AXP.330.251616
25x16x20	AXP.330.251620
25x16x25	AXP.330.251625
25x20x16	AXP.330.252016
25x20x20	AXP.330.252020
25x20x25	AXP.330.252025
25x25x16	AXP.330.252516
32x16x32	AXP.330.321632
32x20x20	AXP.330.322020
32x20x25	AXP.330.322025
32x20x32	AXP.330.322032
32x25x20	AXP.330.322520
32x25x25	AXP.330.322525

Brass threaded fittings PRO AQUA

Socket (Fitting in sectional view)



Brass threaded fittings are used to create detachable connections on steel, copper metalopolymer pipelines and other fittings having a cylindrical pipe thread. Fittings made of brass CW 617 N, passed sandblasting and nickel plated.

To make installation easier while using flax or paste, all fittings have special notches on the male threads to create a stronger connection.



Socket

Size	Code
1/2 x 1/2	01-f15-f15x
3/4 x 3/4	01-f20-f20x
1	01-f25-f25x
1 1/4	01-f32-f32x
1 1/2	01-f40-f40x
2	01-f50-f50x



Reducing socket

Size	Code
1/2 x 3/8	01-f15-f10x
3/4 x 1/4	01-f20-f6x
3/4 x 1/2	01-f20-f15x
1 x 1/2	01-f25-f15x
1 x 3/4	01-f25-f20x
1 1/4 x 1/2	01-f32-f15x
1 1/4 x 3/4	01-f32-f20x
1 1/4 x 1	01-f32-f25x
1 1/2 x 1	01-f40-f25x
1 1/2 x 1 1/4	01-f40-f32x
2 x 1	01-f50-f25x
2 x 1 1/4	01-f50-f32x
2 x 1 1/2	01-f50-f40x



Cap M

Size	Code
1/4	09-m6x
3/8	09-m10x
1/2	09-m15x
3/4	09-m20x
1	09-m25x
1 1/4	09-m32x
1 1/2	09-m40x
2	09-m50x



Cap F

Size	Code
3/8	09-f10x
1/2	09-f15x
3/4	09-f20x
1	09-f25x
1 1/4	09-f32x
1 1/2	09-f40x
2	09-f50x

Nipple



Size	Code
3/8	06-m10-m10x
1/2 x 1/2	06-m15-m15x
3/4 x 3/4	06-m20-m20x
1 x 1	06-m25-m25x
1 1/4 x 1 1/4	06-m32-m32x
1 1/2 x 1 1/2	06-m40-m40x
2 x 2	06-m50-m50x

Reducing nipple



Size	Code	Size	Code
3/8 x 1/4	06-m10-m6x	1 1/4 x 3/4	06-m32-m20x
1/2 x 1/4	06-m15-m6x	1 1/4 x 1	06-M32-M25x
1/2 x 3/8	06-m15-m10x	1 1/2 x 3/4	06-m40-m20x
1/2 x 3/4	06-m20-m15x	1 1/2 x 1/2	06-m40-m15x
1/2 x 1	06-m25-m15x	1 1/2 x 1	06-m40-m25x
1 x 3/4	06-m25-m20x	2 x 1	06-m50-m25x
1 1/4 x 1	06-m32-m25x	2 x 1 1/4	06-m50-m32x
1 1/4 x 1/2	06-m32-m15x	2 x 1 1/2	06-m50-m40x



Nipple with "Eurocone" transition

Size	Code
1/2 x 3/4E	21-m15m20xe

Extension F/M



Size	Code
1/4 x 1/2	08-m6-f15x
3/8 x 1/2	08-m10-f15x
1/2 x 3/4	08-m15-f20x
1/2 x 1	08-m15-f25x
1/2 x 1 1/4	08-m15-f32x
3/4 x 1	08-m20-f25x
3/4 x 1 1/4	08-m20-f32x
1 x 1 1/4	08-m25-f32x
1 x 1 1/2	08-m25-f40x
2 x 1	08-m25-f50x
1 1/2 x 1 1/4	08-m32-f40x
2 x 1 1/4	08-m32-f50x
1 1/2 x 2	08-m40-f50x

Hexagonal reducing bush



Size	Code	Size	Code
3/8 x 1/4	05-m10-f6x	1 1/2 x 1/2	05-m40-f15x
1/2 x 1/4	05-m15-f7x	1 1/2 x 3/4	05-m40-f20x
1/2 x 3/8	05-m15-f10x	1-1/2 x 1	05-m40-f25x
3/4 x 3/8	05-m20-f10x	1 1/2 x 1 1/4	05-m40-f32x
3/4 x 1/2	05-m20-f15x	2 x 1/2	05-m50-f15x
1 x 1/2	05-m25-f15x	2 x 3/4	05-m50-f20x
1 x 3/4	05-m25-f20x	2 x 1	05-m50-f25x
1 1/4 x 1/2	05-m32-f15x	2 x 1 1/4	05-m50-f32x
1 1/4 x 3/4	05-m32-f20x	2 x 1 1/2	05-m50-f40x
1 1/4 x 1	05-m32-f25x		

Chrome-plated extension F/M



Size	Code	Size	Code
1/2" x 10	07-m15-f10cr	1/2" x 70	07-m15-f70cr
1/2" x 15	07-m15-f15cr	1/2" x 80	07-m15-f80cr
1/2" x 20	07-m15-f20cr	1/2" x 100	07-m15-f100cr
1/2" x 25	07-m15-f25cr	3/4" x 15	07-m20-f15cr
1/2" x 30	07-m15-f30cr	3/4" x 20	07-m20-f20cr
1/2" x 40	07-m15-f40cr	3/4" x 25	07-m20-f25cr
1/2" x 50	07-m15-f50cr	3/4" x 30	07-m20-f30cr
1/2" x 60	07-m15-f60cr	3/4" x 40	07-m20-f40cr

Extension F/M



Size	Code
1/2" x 10	07-m15-f10x
1/2" x 15	07-m15-f15x
1/2" x 20	07-m15-f20x
1/2" x 25	07-m15-f25x
1/2" x 30	07-m15-f30x
1/2" x 40	07-m15-f40x
1/2" x 50	07-m15-f50x

Elbow M



Size	Code
1/2 x 1/2	02-m15-m15x
3/4 x 3/4	02-m20-m20x
1 x 1	02-m25-m25x

Elbow F



Size	Code
1/2 x 1/2	02-f15-f15x
3/4 x 3/4	02-f20-f20x
1	02-f25-f25x
1 1/4	02-f32-f32x
1 1/2	02-f40-f40x
2	02-f50-f50x

Elbow F/M



Size	Code
1/2 x 1/2	02-m15-f15x
3/4 x 3/4	02-m15-f20x
1 x 1	02-m15-f25x
1 1/4	02-m15-f32x
1 1/2	02-m15-f40x
2	02-m15-f50x



Wall-plate elbow

Size	Code
1/2	02-f15-f15wp



Tee F

Size	Code
1/2	03-f15-f15-f15x
3/4	03-f20-f20-f20x
1	03-f25-f25-f25x
1 1/4	03-f32-f32-f32x
1 1/2	03-f40-f40-f40x
2	03-f50-f50-f50x



Reducing Tee

Size	Code
1/2 x 3/4 x 1/2	03-f15-f20-f15x
3/4 x 1/2 x 3/4	03-f20-f15-f20x
1 x 1/2 x 1	03-f25-f15-f25x
1 x 3/4 x 1	03-f25-f20-f25x
1 1/4 x 1/2 x 1 1/4	03-f32-f15-f32x
1 1/4 x 3/4 x 1 1/4	03-f32-f20-f32x
1 1/4 x 1 x 1 1/4	03-f32-f25-f32x



Tee M

Size	Code
1/2	03-m15-m15-m15x
3/4	03-m20-m20-m20x
1	03-m25-m25-m25x



Tee for collector M

Size	Code
3/4	17-m20-f15-f10x
1	17-m25-f15-f10x



Cross F

Size	Code
1/2	13-f15x
3/4	13-f20x
1	13-f25x



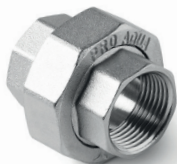
Backnut

Size	Code
1/2	15-f15x
3/4	15-f20x
1	15-f25x
1 1/4	15-f32x
1 1/2	15-f40x
2	15-f50x



Straight union M/F

Size	Code
1/2	10-m15-f15x
3/4	10-m20-f20x
1	10-m25-f25x
1 1/4	10-m32-f32x
1 1/2	10-m40-f40x
2	10-m50-f50x



Straight union F

Size	Code
1/2 x 1/2	20-f15-f15x
3/4 x 3/4	20-f20-f20x
1 x 1	20-f25-f25x
1 1/4 x 1 1/4	20-f32-f32x



Chrome-plated straight union

Size	Code
1 x 1	20-f25-f15cr



Straight union M

Size	Code
1/2 x 1/2	20-m15-m15x
3/4 x 3/4	20-m20-m20x



Elbow union M/F

Size	Code
1/2	11-m15-f15x
3/4	11-m20-f20x
1	11-m25-f25x
1 1/4	11-m32-f32x
1 1/2	11-m40-f40x
2	11-m50-f50x



Hose adaptor M

Size	Code
1/2" x 10	16-m15-10x
1/2" x 12	16-m15-12x
1/2" x 14	16-m15-14x
1/2" x 16	16-m15-16x
1/2" x 18	16-m15-18x
1/2" x 20	16-m15-20x
3/4" x 20	16-m20-20x



Hose adaptor F

Size	Code
1/2" x 20	16-f15-20x
3/4" x 20	16-f20-20x



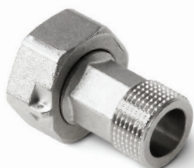
Eccentric connector

Size	Code
3/4 x 1/2	19-m15-m20x



Reducer for connection temperature sensor

Size	Code
M10 x 1/2"	22-m15x
M10 x 3/4"	22-m20x



Water meter coupling with nut for tamper seal wire

Size	Code
1/2 x 3/4	18-m15x
3/4 x 1	18-m20x

Semifinished goods



Insert with internal thread

Size	Code
1/2"	B_745301
3/4"	B_759201
1"	PLAL0131
1 1/4"	PLAL0140
1 1/2"	PLAL0150
2"	PLAL0160



Insert with external thread

Size	Code
1/2"	B_745501
3/4"	B_745601
1"	PLAL0231
1"	PLAL0236
1 1/4"	PLAL0240
1 1/2"	PLAL0250
2"	PLAL0260



Ball for ball valve

Size	Code
1/2"	102.0001
3/4"	102.0005
1"	102.0006
1 1/4"	102.0007
1 1/2"	102.0008
2"	102.0009

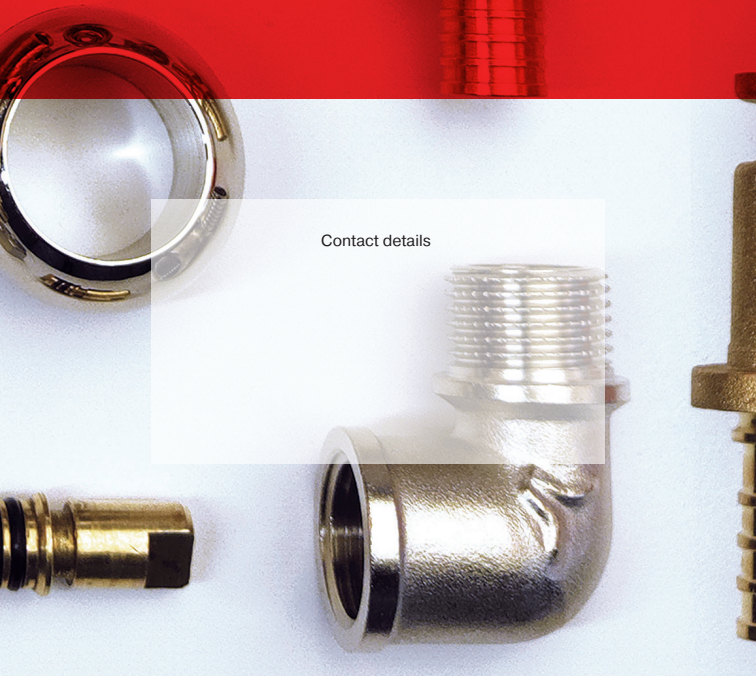


Stem for ball valves

Size	Code
27,5 mm	101.0001
32 mm	101.0002
37,4 mm	101.0003
47,5 mm	101.0010



proaquasystem.com



Contact details