

032



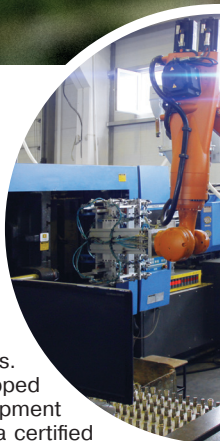
 **PRO AQUA**

PIPES AND FITTINGS
FOR WATER SUPPLY & HEATING SYSTEMS



PRO AQUA factory

The PRO AQUA factory is one of the largest manufacturers, producing polypropylene and polyethylene piping systems for over 22 years for internal and external utility networks. The company's production facility is equipped with modern high-precision European equipment (ZWICK; VINDER; SCITEQ). The factory has a certified





ISO 9001
BUREAU VERITAS
Certification



These products were manufactured under the control established in the quality management system certified by Bureau Veritas Certification and complying with the requirements of ISO 9001:2015, certificate N°: RU003921

N° RU003921

laboratory which monitors the quality of all products manufactured at the factory. Thanks to constant monitoring, the products produced by the factory maintain consistently high quality. All products manufactured by the company have a warranty period of 10 years.

PRO AQUA Pipes and Fittings

PRO AQUA pipes and fittings are produced with high quality raw materials - Polypropylene Random Copolymer (Type - 3 polypropylene). The physical and chemical properties of the material allow the use of pipes and fittings for various purposes; hot and cold water supply, heating, technological pipelines of the food and chemical industry, filtration and water treatment systems.

Our pipes and fittings offers various advantages:

- Resistance to high temperatures
- High hygienic properties
- Vibration and noise suppression
- Absolute corrosion resistance
- Chemical resistance to more than three hundred substances and solutions
- Smooth and durable inner surface
- Easy installation and repairing
- Thermal insulation properties - $0,22 \text{ W/m}^2\text{K}$.
- Environmental friendliness (recycling)
- Does not emit harmful gases when burned. Not toxic

Raw Material-**Polypropylene Random Copolymer**
(polypropylene Type-3)



Property	Test Method	Unit	Typical Value
Kinematic Viscosity	ISO 1191	cm ³ /g	420-500
Melt Flow Rate 230 °C/2,16 kg 190 °C/5,00 kg	ISO 1133	g/10 _{min} g/10 _{min}	≤0,5 ≤0,8
Density	ISO R 1183	g/cm ³	0,900
Autoignition temperature	ASTM D 1929/68	°C	360
Impact Strength (Charpy) 23 °C 0 °C -20 °C	ISO 179/1eU	kJ/m ² kJ/m ² kJ/m ²	no Break no Break 40
Tensile Stress at Yield (50 mm/min)	ISO 527	Mpa	22-23
Flexural Modulus (2 mm/m)	ISO 178	Mpa	800
Tensile Modulus of Elasticity (1 mm/m)	ISO 527	Mpa	900
Coefficient of Linear Thermal Expansion	DIN 53752	1/K	1,5 * 10 ⁻⁴
Coefficient of Thermal Conductivity	DIN 52612	W/m.K	0,24
Specific Heat	Calorimeter	kJ/kg*K	2





SDR 11



SDR 6

■ SDR 11, SDR 6 pipes

Technical Characteristics:

Pipe Type: PP-R Monolayer Pipe;

Colors: white, beige, green.

Length: 2 m, 4 m.

	SDR 11	SDR 6
Cold Water	✓	✓
Hot Water	✗	✓
Heating 60 °	✗	✓
Heating 95 °	✗	✗

Standards:

Diameter 20-160 mm.

The products are manufactured and tested in accordance with the technical requirements of EN ISO 15874 & DIN 8077/8078

Advantages:

- Easy installation (No need of shaving)
- Corrosion free
- Low heat loss. Light weight. 50 years service life
- All products have 10 years warranty

SDR 11 pipe

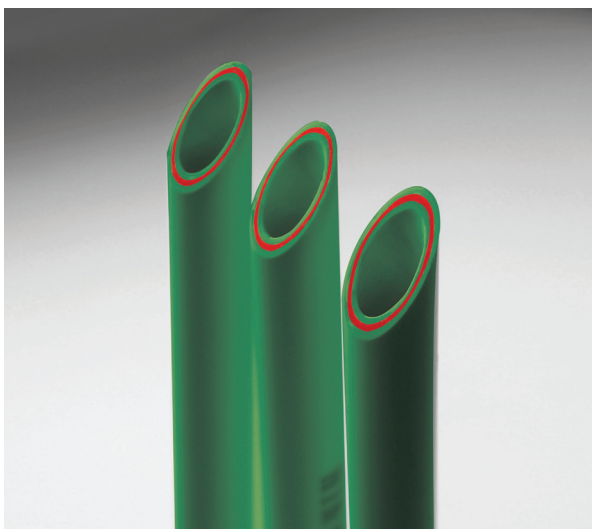
Temperature °C	Service Life (years)	Pressure (bar)
20	50	12,9
40	50	9,2
60	50	6,4

Outside Diameter x Wall Thickness	Code	Package Quantity (m)
20 x 1,9	PA11008V	100
25 x 2,3	PA11010V	80
32 x 2,9	PA11012V	60
40 x 3,7	PA11014V	40
50 x 4,6	PA11016V	24
63 x 5,8	PA11018V	16
75 x 6,8	PA11020V	12
90 x 8,2	PA11022V	8
110 x 10,0	PA11024V	4
125 x 11,4	PA11026V	4
160 x 14,6	PA11028V	4

SDR 6 (PN20) pipe

Temperature °C	Service Life (years)	Pressure (bar)
20	50	25,7
40	50	18,3
60	50	12,9

Outside Diameter x Wall Thickness	Code	Package Quantity (m)
20 x 3,4	PA10008V	100
25 x 4,2	PA10010V	80
32 x 5,4	PA10012V	60
40 x 6,7	PA10014V	40
50 x 8,3	PA10016V	24
63 x 10,5	PA10018V	16
75 x 12,5	PA10020V	12
90 x 15,0	PA10022V	8
110 x 18,3	PA10024V	4
125 x 20,8	PA10026V	4
160 x 26,6	PA10028V	4



Rubis

Rubis pipe

Technical Characteristics:

Pipe Type: Fiber-glass reinforced PP-R Pipe;

Colors: white, beige, green;

Length: 2 m, 4 m.

	SDR 7.4	SDR 6
Cold Water	✓	✓
Hot Water	✓	✓
Heating 60 °	✓	✓
Heating 95 °	✗	✓

Standards:

Diameter 20-160 mm.

The products are manufactured and tested in accordance with the technical requirements of EN ISO 15874 & DIN 8077/8078

Advantages:

- Easy installation (No need of shaving)
- Corrosion free
- Low heat loss. Light weight. 50 years service life
- Suitable for heating systems
- Significantly reduced dilatation in hot water transportation
- Coefficient of Linear Thermal Expansion: 0.035 mm/m · °C
- All products have warranty

SDR 7.4 Rubis pipe

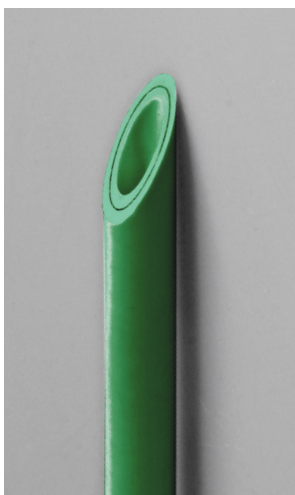
Temperature °C	Service Life (years)	Pressure (bar)
20	50	20,4
40	50	14,5
60	50	10,2
70	50	6,7
80	25	5,1

Outside Diameter x Wall Thickness	Code	Package Quantity (m)
20 x 2,8	PA35008V	100
25 x 3,5	PA35010V	80
32 x 4,4	PA35012V	60
40 x 5,5	PA35014V	40
50 x 6,9	PA35016V	24
63 x 8,6	PA35018V	16
75 x 10,3	PA35020V	12
90 x 12,3	PA35022V	8
110 x 15,1	PA35024V	4
125 x 17,1	PA35026V	4
160 x 21,9	PA35028V	4

SDR 6 Rubis pipe

Temperature °C	Service Life (years)	Pressure (bar)
20	50	25,7
40	50	18,3
60	50	12,9
70	50	8,5
80	25	6,5
95	5	5,2

Outside Diameter x Wall Thickness	Code	Package Quantity (m)
20 x 3,4	PA37008V	100
25 x 4,2	PA37010V	80
32 x 5,4	PA37012V	60
40 x 6,7	PA37014V	40
50 x 8,3	PA37016V	24
63 x 10,5	PA37018V	16
75 x 12,5	PA37020V	12
90 x 15	PA37022V	8
110 x 18,3	PA37024V	4
125 x 20,8	PA37026V	4
160 x 26,6	PA37028V	4



SDR 6 DUO



PN25

■ Pipe with aluminum layer PN 25 Pipe, SDR 6 DUO pipe

Technical Characteristics:

Pipe Type: PP-R reinforced with Aluminum Layer;

Colors: white, beige, green;

Length: 2 m, 4 m

	SDR 6 DUO	PN 25
Cold Water	✓	✓
Hot Water	✓	✓
Heating 60°	✓	✓
Heating 95°	✗	✓

Standards:

Diameter 20-110 mm

The products are manufactured and tested in accordance with the technical requirements of EN ISO 15874 & DIN 8077/8078

Advantages:

- Corrosion free
- Low heat loss. Light weight. 50 years service life
- Suitable for heating systems
- Significantly reduced dilatation in hot water transportation
- Coefficient of Linear Thermal Expansion: 0.030 mm / m ·°C
- All products have warranty
- Oxygen barrier

SDR 5 (PN 25) pipe with aluminum layer

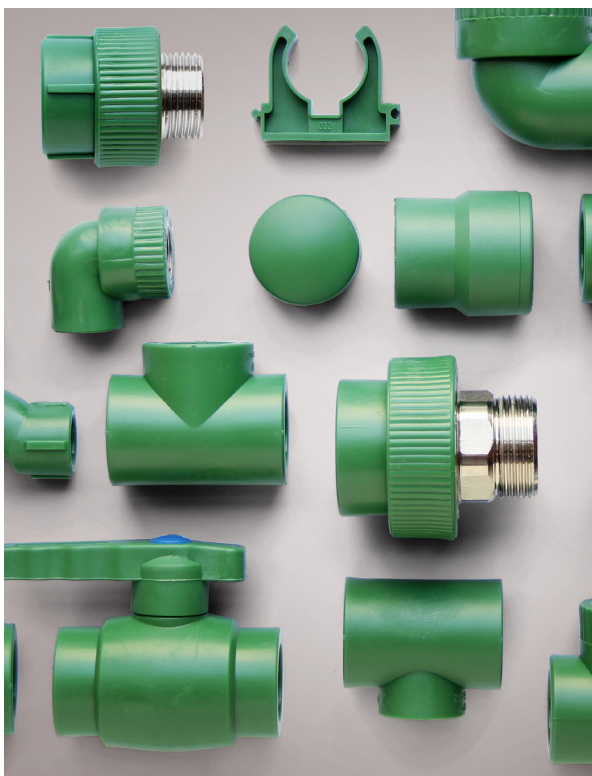
Temperature °C	Service Life (years)	Pressure (bar)
20	50	32,4
40	50	23,1
60	50	16,2
70	50	10,7
95	5	6,5

Outside Diameter x Wall Thickness	Code	Package Quantity (m)
20 x 4,0	PA30008V	100
25 x 4,8	PA30010V	80
32 x 6,0	PA30012V	60
40 x 7,4	PA30014V	40
50 x 9,4	PA30016V	24
63 x 11,7	PA30018V	16
75 x 13,7	PA30020V	12
90 x 16,4	PA30022V	8
110 x 19,5	PA30024V	4

SDR 6 DUO pipe with aluminum in middle layer

Temperature °C	Service Life (years)	Pressure (bar)
20	50	25,7
40	50	18,3
60	50	12,9
70	50	8,5
80	25	6,5

Outside Diameter x Wall Thickness	Code	Package Quantity (m)
20 x 3,4	PA39008V	100
25 x 4,2	PA39010V	80
32 x 5,4	PA39012V	60
40 x 6,7	PA39014V	40
50 x 8,3	PA39016V	24
63 x 10,5	PA39018V	16



PRO AQUA Fittings

Produced with high quality Polypropylene Random Copolymer (Type-3 polypropylene) raw material. Brass inserts of fittings are manufactured internally.

Specifications:

- Maximum working temperature: 95 °C
- Gasket material: EPDM
- Material of inserts: brass CW617N
- Thread type: inch
- Diameters: from 20 to 160 mm
- Color options: white, beige, green
- Produced according to EN ISO 15874 norms
- All products are insured.

Coupling



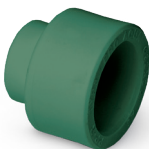
Diameter, mm	Quantity per Box/bag	Code
20	500/100	PA12008V
25	300/50	PA12010V
32	200/50	PA12012V
40	100/25	PA12014V
50	60/10	PA12016V
63	42/7	PA12018V
75	24/4	PA12020V
90	12/4	PA12022V
110	6/1	PA12024V
125	6/1	PA12026V
160		PA12028V

Reducing coupling F/M



Diameter, mm	Quantity per Box/bag	Code
25x20	500/100	PA12512V
32x20	300/50	PA12514V
32x25	300/50	PA12516V
40x20	200/50	PA12518V
40x25	200/50	PA12520V
40x32	200/25	PA12522V
50x20	120/30	PA12524V
50x25	120/30	PA12526V
50x32	100/25	PA12528V
50x40	80/20	PA12530V
63x25	90/15	PA12532V
63x32	60/20	PA12534V
63x40	60/20	PA12536V
63x50	48/16	PA12538V
75x50	36/9	PA12540V
75x63	24/6	PA12542V
90x63	18/6	PA12544V
90x75	18/6	PA12546V
110x75	12/4	PA12547Pv
110x90	10/2	PA12548V
125x110	5/1	PA12550V

Reducing coupling



Diameter, mm	Quantity per Box/bag	Code
25-20	400/75	PA1261008V
32-20	200/50	PA1261208V
32-25	200/50	PA1261210V
40-20	200/1	PA12614008V
40-25	200/1	PA12614010V
40-32	160/1	PA12614012V
50-20	160/1	PA12616008V
50-25	100/1	PA12616010V
50-32	100/1	PA12616012V
50-40	100/1	PA12616014V
63-20	60/1	PA12618008V
63-25	60/1	PA12618010V
63-32	60/1	PA12618012V
63-40	60/1	PA12618014V
63-50	48/1	PA12618016V

Elbow 90°



Diameter, mm	Quantity per Box/bag	Code
20	350/50	PA13008V
25	200/50	PA13010V
32	100/25	PA13012V
40	60/10	PA13014V
50	30/10	PA13016V
63	20/5	PA13018
75	8/2	PA13020V
90	4/2	PA13022V
110	2/1	PA13024V
125	2/1	PA13026V
160		PA13028V



Elbow 45°

Diameter, mm	Quantity per Box/bag	Code
20	400/50	PA13508V
25	250/50	PA13510V
32	125/25	PA13512V
40	80/20	PA13514V
50	40/10	PA13516V
63	20/5	PA13518V
75	12/2	PA13520V
90	6/2	PA13522V
110	3/1	PA13524V
125	2/1	PA13526Pv



Reducing Elbow 90°

Diameter, mm	Quantity per Box/bag	Code
25x20	200/50	PA1371008v
32x20	200/50	PA1371208v
32x25	100/25	PA1371210v



Reducing Elbow F/M 90°

Diameter, mm	Quantity per Box/bag	Code
25x20	300/50	PA13608Pv
32x20	175/25	PA13610Pv
32x25	80/20	PA13612Pv



Reducing Elbow F/M 45°

Diameter, mm	Quantity per Box/bag	Code
20	200/50	PA13808V
25	100/50	PA13810V



Cross

Diameter, mm	Quantity per Box/bag	Code
20	150/25	PA17008V
25	100/25	PA17010V
32	50/10	PA17012V
40	30/10	PA17014V
50	18/6	PA17016V



Reducing cross

Diameter, mm	Quantity per Box/bag	Code
25x20	100/20	PA17521V
32x25	60/15	PA17532V
40x32	20/10	PA17543V



Tee

Diameter, mm	Quantity per Box/bag	Code
20	200/50	PA14008V
25	150/25	PA14010V
32	60/10	PA14012V
40	40/10	PA14014V
50	20/5	PA14016V
63	16/4	PA14018V
75	8/2	PA14020V
90	4/2	PA14022V
110	2/1	PA14024V
125	2/1	PA14026V

Reducing tee



Diameter, mm	Quantity per Box/bag	Code
20x25x20	200/25	PA14518V
25x20x20	200/25	PA14520V
25x25x20	150/25	PA14522V
25x20x25	150/25	PA14521V
32x20x20	80/20	PA14530V
32x20x25	80/20	PA14531V
32x20x32	100/25	PA14532V
32x25x20	80/20	PA14533V
32x25x25	80/20	PA14534V
32x25x32	80/20	PA14535V
40x20x40	80/10	PA14540V
40x25x32	50/10	PA14543V
40x25x40	60/10	PA14541V
40x32x25	50/10	PA14544V
40x32x40	60/10	PA14542V
50x20x50	24/6	PA14559V
50x25x50	40/8	PA14550V
50x32x50	40/8	PA14551V
50x40x50	32/8	PA14552V
63x20x63	16/4	PA14560V
63x25x63	24/6	PA14562V
63x32x63	24/6	PA14563V
63x40x63	16/4	PA14564V
63x50x63	16/4	PA14565V
75x25x75	12/4	PA14570V
75x32x75	12/4	PA14571V
75x40x75	10/2	PA14572V
75x50x75	10/2	PA14573V
75x63x75	8/2	PA14574V
90x40x90	4/1	PA14578V
90x50x90	4/1	PA14580V
90x63x90	4/1	PA14582V
90x75x90	4/1	PA14584V
110x50x110	2/1	PA14586V
110x63x110	2/1	PA14596V
110x75x110	2/1	PA14598V
110x90x110	2/1	PA14600V



Corner T

Diameter, mm	Quantity per Box/bag	Code
20	200/25	PA17308V
25	150/25	PA17310V

End cap



Diameter, mm	Quantity per Box/bag	Code
20	600/100	PA15008V
25	400/100	PA15010V
32	200/50	PA15012V
40	150/25	PA15014V
50	80/20	PA15016V
63	48/12	PA15018V
75	30/6	PA15020V
90	18/3	PA15022V
110	8/2	PA15024V
125		PA15026V



Male threaded end cap

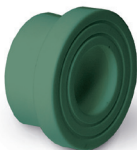
Diameter, mm	Quantity per Box/bag	Code
1/2"	600/100	PA15508V
3/4"	400/100	PA15510V



Long neck

Diameter, mm	Quantity per Box/bag	Code
20	600/200	PA64000V

Neck for flange PN10



Diameter, mm	Quantity per Box/bag	Code
20	200/1	PA51120V
25	250/1	PA51125V
32	300/1	PA51132V
40	150/1	PA51140V
50	100/1	PA51150V
63	50/1	PA51163V
75	30/1	PA51175V
90	20/1	PA51190V
110	10/1	PA51110V

Plastic flange EN 1092



Diameter, mm	Quantity per Box/bag	Code
20	170/1	PA51220V
25	120/1	PA51225V
32	110/1	PA51232V
40	50/1	PA51240V
50	25/1	PA51250V
63	30/1	PA51263V
75	25/1	PA51275V
90	15/1	PA51290V
110	10/1	PA52110V

Complete flange & neck EN 1092



Diameter, mm	Quantity per Box/bag	Code
20	1/1	PA56020V
25	1/1	PA56025V
32	1/1	PA56032V
40	1/1	PA56040V
50	1/1	PA56050V
63	1/1	PA56063V
75	1/1	PA56075V
90	1/1	PA56090V
110	1/1	PA56110V

Sleeve



Diameter, mm	Quantity per Box/bag	Code
16	800/100	PA18006V
20	500/100	PA18008V
25	400/50	PA18010V
32	300/50	PA18012V
40	350/50	PA18014V
63	200/50	PA22018V

Double sleeve



Diameter, mm	Quantity per Box/bag	Code
20	200/50	PA18508V
25	200/50	PA18510V
32	150/50	PA18512V



Cross over

Diameter, mm	Quantity per Box/bag	Code
20	100/25	PA16008V
25	50/10	PA16010V
32	30/5	PA16012V
40	20/5	PA16014V



cross over with socket F/F

Diameter, mm	Quantity per Box/bag	Code
20	150/25	PA16116V
25	80/20	PA16118V
32	40/10	PA16120V
40	20/2	PA16122V



Plastic union

Diameter, mm	Quantity per Box/bag	Code
20	60/30	PA19008V
25	40/20	PA19010V
32	24/24	PA19012V
40	12/12	PA19014V
50	10/10	PA19016V
63	5/5	PA19018V



Expansion joint

Diameter, mm	Quantity per Box/bag	Code
20	10/10	PA54008V
25	8/8	PA54010V
32	5/5	PA54012V
40	4/4	PA54014V



Transition piece female

Diameter, mm	Quantity per Box/bag	Code
20x1/2"	200/25	PA22008V
20x3/4"	100/10	PA22010V
25x1/2"	150/10	PA22012V
25x3/4"	150/10	PA22014V
25x1	60/10	PA22013Pv
32x1/2	80/10	PA22015Pv
32x3/4"	80/10	PA22016V
32x1"	80/10	PA22018V
40x1"	80/10	PA22020V



Transition piece male

Diameter, mm	Quantity per Box/bag	Code
20x1/2"	150/25	PA23008V
20x3/4"	80/10	PA23010V
25x1/2"	150/10	PA23012V
25x3/4"	100/10	PA23014V
25x1	60/10	PA23013Pv
32x1/2	80/10	PA23015Pv
32x3/4"	80/10	PA23016V
32x1"	60/10	PA23018V
40x1"	80/10	PA23020V

Transition piece hex. female



Diameter, mm	Quantity per Box/bag	Code
32x1"	50/10	PA22518V
40x1 1/4"	20/5	PA22520V
50x1 1/2"	20/2	PA22522V
63x2"	12/2	PA22524V
75x2 1/2"	10/1	PA22526V
90x3"	8/1	PA22528V
110x4"	5/1	PA22530V

Transition piece hex. male



Diameter, mm	Quantity per Box/bag	Code
32x1"	40/10	PA23518V
40x1 1/4"	20/5	PA23520V
40x1 1/2"	20/5	PA23521V
50x1 1/2"	16/2	PA23522V
50x2"	12/2	PA23523V
63x2"	12/2	PA23524V
75x2 1/2"	6/1	PA23526V
90x3"	4/1	PA23528V
110x4"	2/1	PA23530V

Coupling with loose nut



Diameter, mm	Quantity per Box/bag	Code
20x1/2"	160/4	PA29008V
20x3/4"	160/4	PA29010V
25x3/4"	100/20	PA29014V
25x1"	100/2	PA29015V
32x1"	60/2	PA29018V
32x1 1/4"	60/5	PA29019V

Elbow with loose nut



Diameter, mm	Quantity per Box/bag	Code
20x1/2"	100/1	PA29208V
20x3/4"	80/1	PA29210V
25x3/4"	100/20	PA29214V
25x1"	40/10	PA29215V
32x1"	40/10	PA29218V
32x1 1/4"	40/10	PA29219V

PP-R – PEX transition piece



Diameter, mm	Quantity per Box/bag	Code
20x16	160/4	PA76008V

PP-R Eurocone



Diameter, mm	Quantity per Box/bag	Code
20x3/4	160/40	PA75010V

Elbow 90° female



Diameter, mm	Quantity per Box/bag	Code
20x1/2"	150/10	PA26008V
20x3/4"	120/10	PA26010V
25x1/2"	100/10	PA26012V
25x3/4"	100/10	PA26014V
32x1/2"	50/10	PA26016V
32x3/4"	50/10	PA26015V
32x1"	50/10	PA26018V

Elbow 90° male



Diameter, mm	Quantity per Box/bag	Code
20x1/2"	150/10	PA27008V
20x3/4"	100/10	PA27010V
25x1/2"	100/10	PA27012V
25x3/4"	100/10	PA27014V
32x1/2"	50/10	PA27015V
32x3/4"	40/10	PA27016V
32x1"	40/10	PA27018V



Wall mount elbow female

Diameter, mm	Quantity per Box/bag	Code
20x1/2"	150/10	PA28008V
25x1/2"	90/10	PA28012V
25x3/4"	90/10	PA28014Pv



Wall mount elbow male

Diameter, mm	Quantity per Box/bag	Code
20x1/2"	150/10	PA28108V
25x1/2"	100/10	PA28112V
25x3/4"	100/10	PA28114Pv

Tee female with loose nut



Diameter, mm	Quantity per Box/bag	Code
20x1/2"	120/20	PA29108V
20x3/4"	90/15	PA29110V
25x3/4"	60/20	PA29114V
25x1"	40/2	PA29115V
32x1"	40/10	PA29118V
32x1 1/4"	30/10	PA29119V



T-piece male

Diameter, mm	Quantity per Box/bag	Code
20x1/2"	100/10	PA25008V
20x3/4"	80/10	PA25010V
25x1/2"	100/10	PA25012V
25x3/4"	50/10	PA25014V
32x3/4"	60/10	PA25016V
32x1/2"	60/10	PA25015v
32x1"	40/5	PA25018V



T-piece female

Diameter, mm	Quantity per Box/bag	Code
20x1/2"	150/25	PA24008V
20x3/4"	100/10	PA24010V
25x1/2"	100/10	PA24012V
25x3/4"	80/10	PA24014V
32x3/4"	60/10	PA24016V
32x1/2"	60/10	PA24015v
32x1"	50/10	PA24018V

Coupling screw joint female



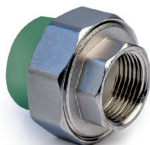
Diameter, mm	Quantity per Box/bag	Code
20x1/2"	150/25	PA20008V
20x3/4"	70/5	PA20010V
20x1"	50/5	PA20011V
25x1/2"	60/10	PA20012V
25x3/4"	75/5	PA20014V
25x1"	50/10	PA20015V
32x3/4"	50/10	PA20016V
32x1"	50/10	PA20018V
32x1 1/4"	20/5	PA20019V
40x1 1/4"	30/6	PA20020V
50x1 1/2"	20/4	PA20022V
63x2"	8/2	PA20024V
75x2 1/2"	5/1	PA20026V

Coupling screw joint male



Diameter, mm	Quantity per Box/bag	Code
20x1/2"	125/25	PA21008V
20x3/4"	60/10	PA21010V
20x1"	40/5	PA21011V
25x1/2"	50/10	PA21012V
25x3/4"	65/5	PA21014V
25x1"	40/10	PA21015V
32x3/4"	40/10	PA21016V
32x1"	50/10	PA21018V
32x1 1/4"	20/5	PA21019V
40x1 1/4"	25/5	PA21020V
50x1 1/2"	16/4	PA21022V
63x2"	8/2	PA21024V
75x2 1/2"	5/1	PA20026V

Reinforced coupling screw joint female



Diameter, mm	Quantity per Box/bag	Code
20x1/2"	150/25	PA20008Sv
25x3/4"	75/15	PA20014Sv
32x1 1/4"	50/10	PA20018Sv

Reinforced coupling screw joint male



Diameter, mm	Quantity per Box/bag	Code
20x1/2"	150/25	PA21008Sv
25x3/4"	75/15	PA21014Sv
32x1 1/4"	50/10	PA21018Sv



Bypass elbow female

Diameter, mm	Quantity per Box/bag	Code
20x1/2"	50/25	PA13912V



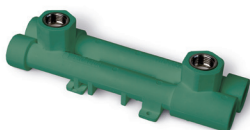
Double elbow with holder female

Diameter, mm	Quantity per Box/bag	Code
20x1/2"	150/25	PA20008V
25x1/2"	60/10	PA20012V



Double elbow with holder male

Diameter, mm	Quantity per Box/bag	Code
20x1/2"	120/10	PA28108V
25x1/2"	100/10	PA28112V



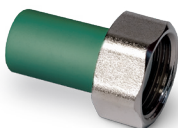
Mounting group

Diameter, mm	Quantity per Box/bag	Code
20x1/2"	20/1	PA60008V
25x1/2"	16/4	PA60010V



Coupling with nut

Diameter, mm	Quantity per Box/bag	Code
20x3/4"	140/20	PA72008V
25x1"	80/20	PA72010V
32x1 1/4"	40/10	PA72012V



Nipple with loose nut

Diameter, mm	Quantity per Box/bag	Code
20x3/4"	250/50	PA70010V
25x1"	160/40	PA70014V
32x1 1/4"	75/25	PA70016V



Nipple with loose nut for watermeter

Diameter, mm	Quantity per Box/bag	Code
20x3/4"	180/30	PA73008V
25x1"	150/25	PA73010V
32x1 1/4"	120/20	PA73012V



PP-R check valve

Diameter, mm	Quantity per Box/bag	Code
20	100/1	PA47008V
25	80/1	PA47010V
32	50/1	PA47012V



Assembling plate

Diameter, mm	Quantity per Box/bag	Code
200	90/1	PA91100V



PP-R filter female/female

Diameter, mm	Quantity per Box/bag	Code
20	80/1	PA440008V
25	50/1	PA440010V
32	30/1	PA440012V
40	20/1	PA440014V



PP-R filter female/male

Diameter, mm	Quantity per Box/bag	Code
20	80/1	PA450008V
25	50/1	PA450010V
32	30/1	PA450012V
40	20/1	PA450014V



Globe valve 90°

Diameter, mm	Quantity per Box/bag	Code
20	50/1	PA42009V
25	40/1	PA42011V
32	20/1	PA42013V



Chromium valve

Diameter, mm	Quantity per Box/bag	Code
20	25/1	PA43008V
25	20/1	PA43010V
32	32/4	PA43012V



Ball valve Standard

Diameter, mm	Quantity per Box/bag	Code
20	60/1	PA44008V
25	50/1	PA44010V
32	30/1	PA44012V
40	20/1	PA44012V

Standard pass



Ball valve Ultra

Diameter, mm	Quantity per Box/bag	Code
20	50/1	PA40008V
25	40/1	PA40010V
32	25/1	PA40012V
40	25/1	PA40014V
50	10/1	PA40016V
63	6/1	PA40018V
75		PA40020V

Full pass



Ball valve Prime

Diameter, mm	Quantity per Box/bag	Code
20	60/1	PA40508V
25	50/1	PA40510V
32	30/1	PA40512V

Full pass



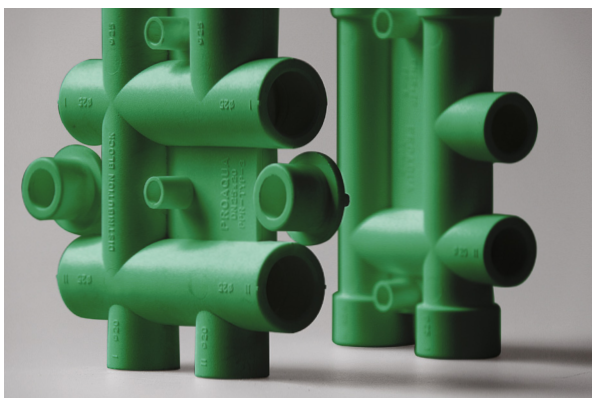
Radiator ball valve straight

Diameter, mm	Quantity per Box/bag	Code
20x1/2"	60/1	PA41008V
25x3/4"	60/1	PA41010V

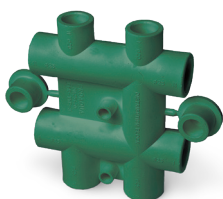
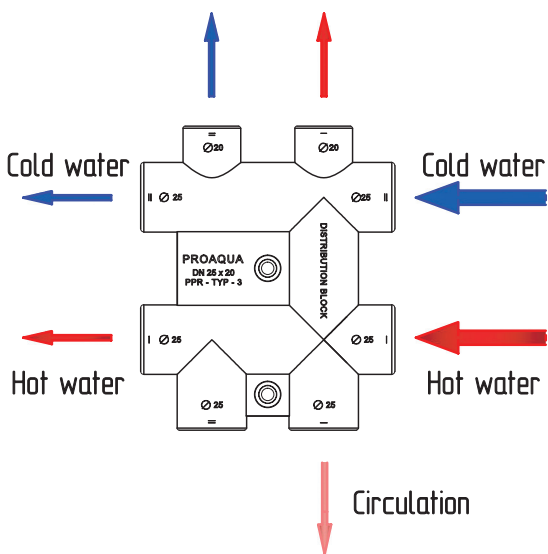


Radiator ball valve elbow

Diameter, mm	Quantity per Box/bag	Code
20x1/2"	50/1	PA42108V
25x3/4"	50/1	PA42110V



Distribution blocks



Distribution block for water supply

Diameter, mm	Quantity per Box/bag	Code
25x20	16/4	PA63012V



Tools

Installation of pipeline systems is impossible without the use of modern reliable tools. We are confident in the quality of our products, so we offer the best equipment for the installation of polypropylene pipes, produced under our own brand PRO AQUA.

Shaver for perforator



Diameter, mm	Quantity per Box/bag	Code
20	1	PA52507
25	1	PA52508
32	1	PA52509
40	1	PA52510
50	1	PA52511
63	1	PA52512

Shaver for PN25 pipe



Diameter, mm	Quantity per Box/bag	Code
16-20	1	PA52006
20-25	1	PA52008
32-40	1	PA52010
50-63	1	PA52012
75	1	PA52014
90	1	PA52016
110	1	PA52018

Shaver for DUO pipe



Diameter, mm	Quantity per Box/bag	Code
20-25	1	PA527008
32-40	1	PA527010
50-63	1	PA527012
75	1	PA527014



Pipe cutter

Diameter, mm	Quantity per Box/bag	Code
16-40	48	ANT-PC-301



Pipe cutter

Diameter, mm	Quantity per Box/bag	Code
50-75	10	PPC-75



Complete welding set

Watt power	Code
1500	CM-01

The Set Includes:

- Metal Case
- Welding Machine;
- Welding Adaptors 20, 25, 32, 40 mm);
- Pipe Cutter;
- Stand with clamp



Complete welding set

Watt power	Code
1500	CM-02

The Set Includes:

- Metal case;
- Welding Machine;
- Welding Adaptors (20, 25, 32, 40 mm);
- Stand



Complete welding set

Watt power	Code
2000	CM-04

The Set Includes:

- Metal case;
- Welding Machine;
- Welding Adaptors (50, 63,75, 90,110 mm);
- Stand with clamp

Welding adaptors



Diameter, mm	Quantity per Box	Code
20	1	PA51008
25	1	PA51010
32	1	PA51012
40	1	PA51014
50	1	PA51016
63	1	PA51018
75	1	PA51020
90	1	PA51022
110	1	PA51024
125	1	PA51026



proaquasystem.com